

Greater Cambridge Shared Planning Draft Local Plan - Drawing competition

As part of our Draft Local Plan consultation, we are inviting your drawings to include in the Plan!

Submit your drawings or illustrations for one or all of the themes:

Climate change
Biodiversity and green spaces
Great places
Wellbeing and social inclusion
Jobs
Homes
Infrastructure

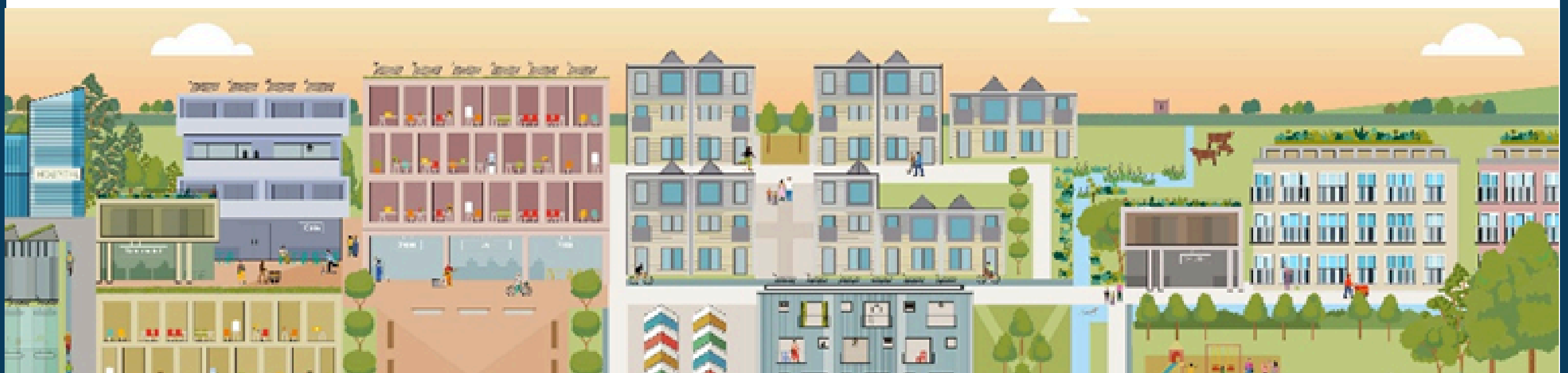


Competition is open from 9am on 1 December 2025 to 5pm on 30 January 2026

Submit your creations to our email address:
localplan@greatercambridgeplanning.org

Please include your name, age and contact details of you or your guardian so we can let you know if you are the winner of one of seven vouchers!

Competition open to all ages. Winners will be announced in February 2026.



To find out more about the Draft Local Plan and for ideas of what to include in your drawings, visit:
<https://www.greatercambridgeplanning.org/local-plan>

